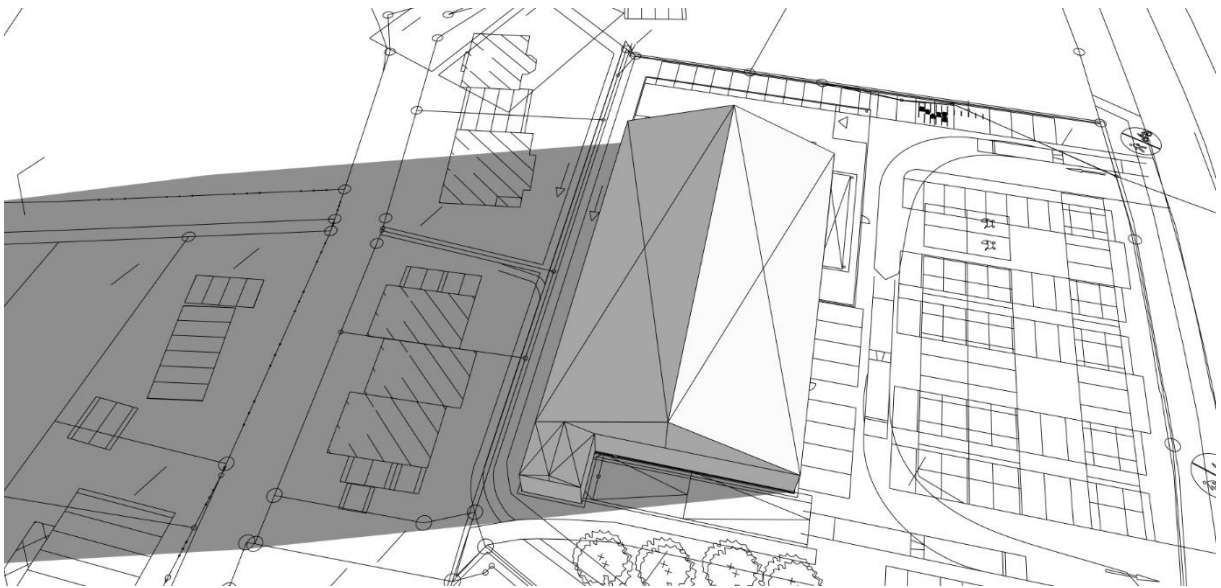
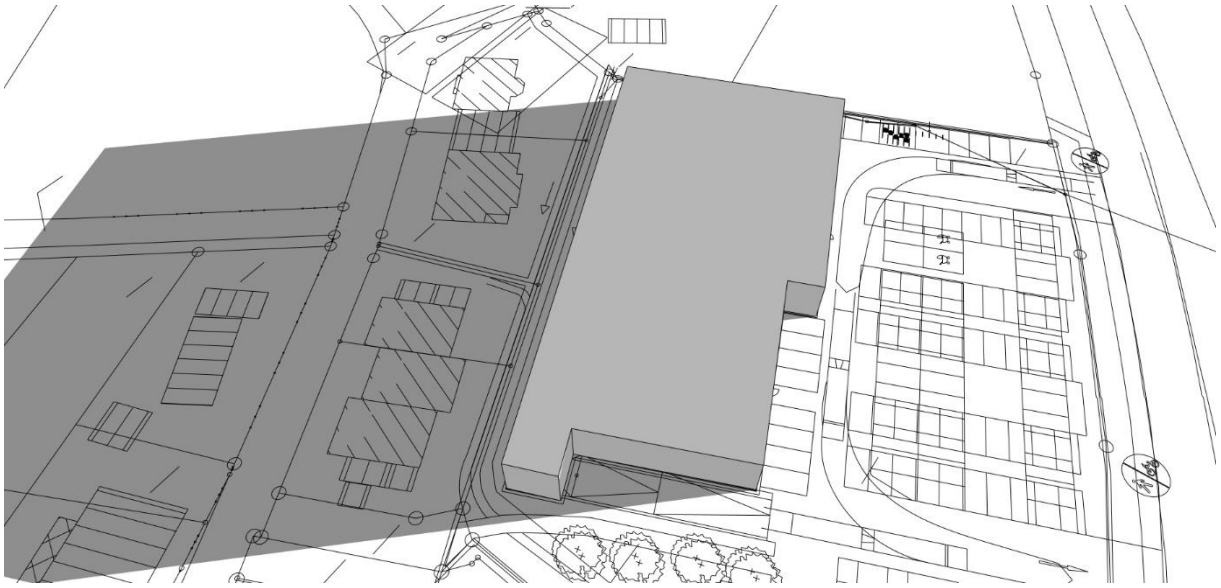


# SCHATTENWURFANALYSE

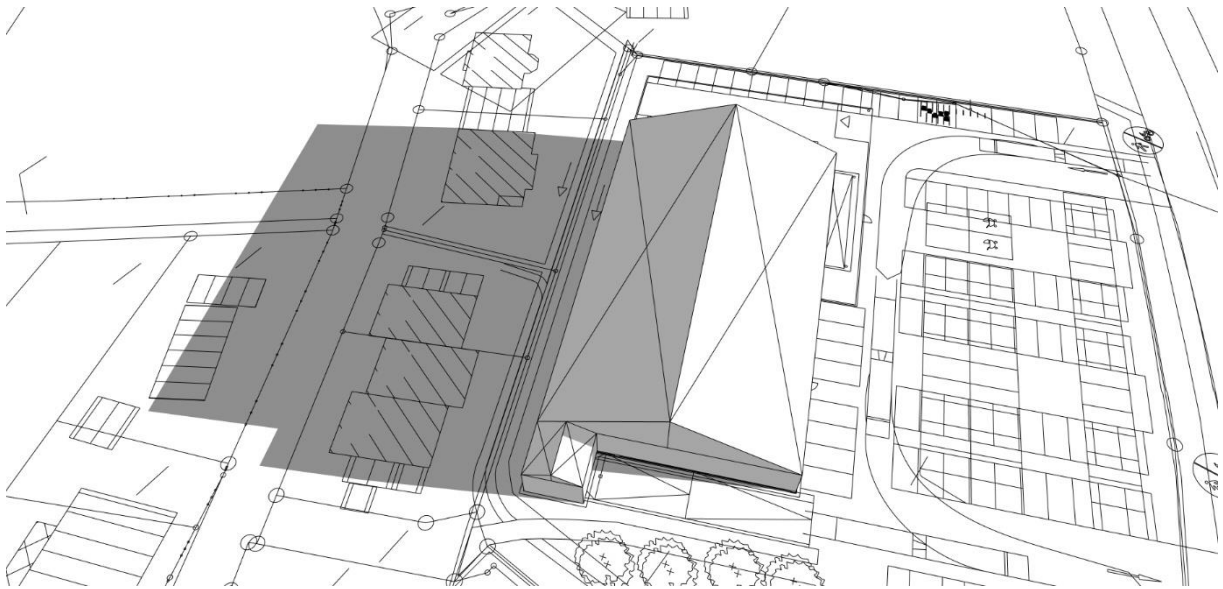
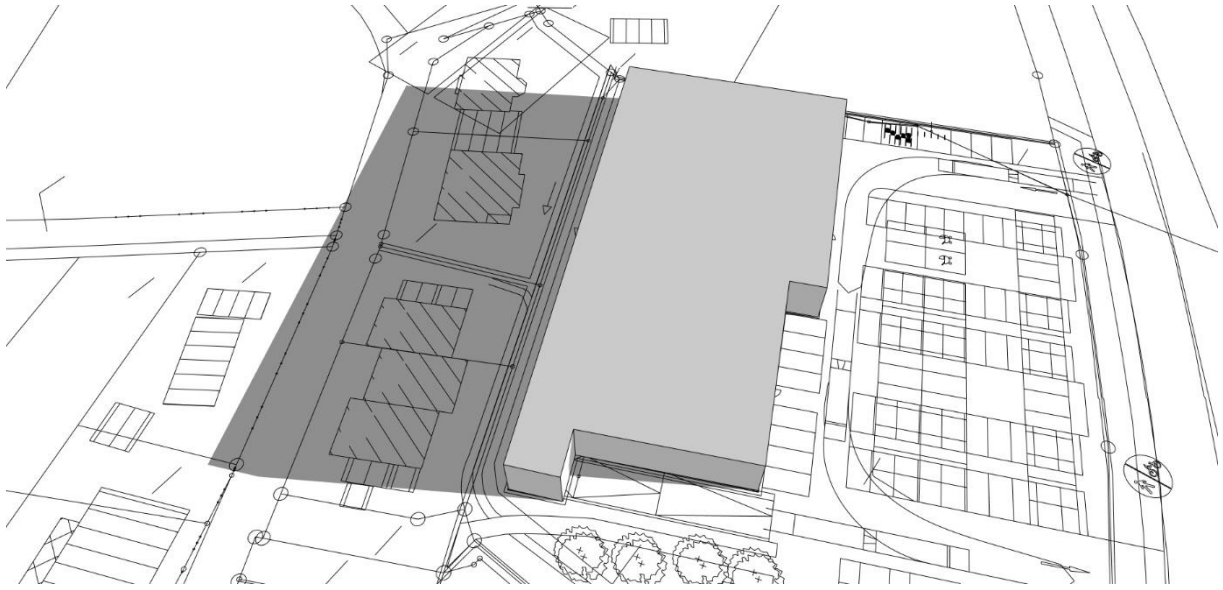
ALDI Bad Rothenfelde

diekmann  
architekten +  
ingenieurgesellschaft

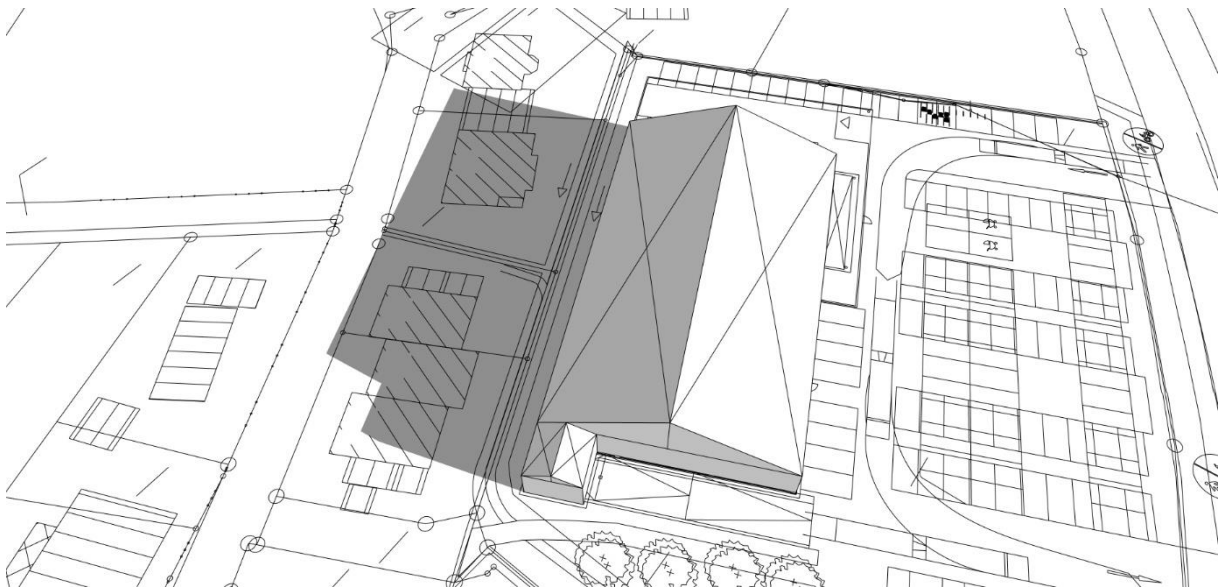
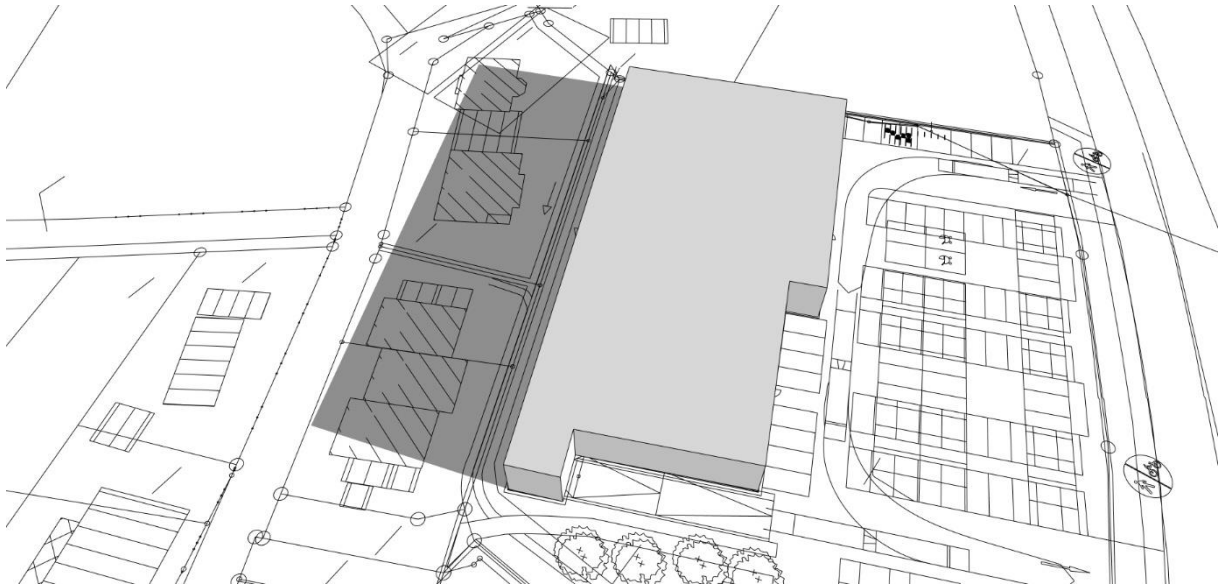
Petershagen 18.11.2024



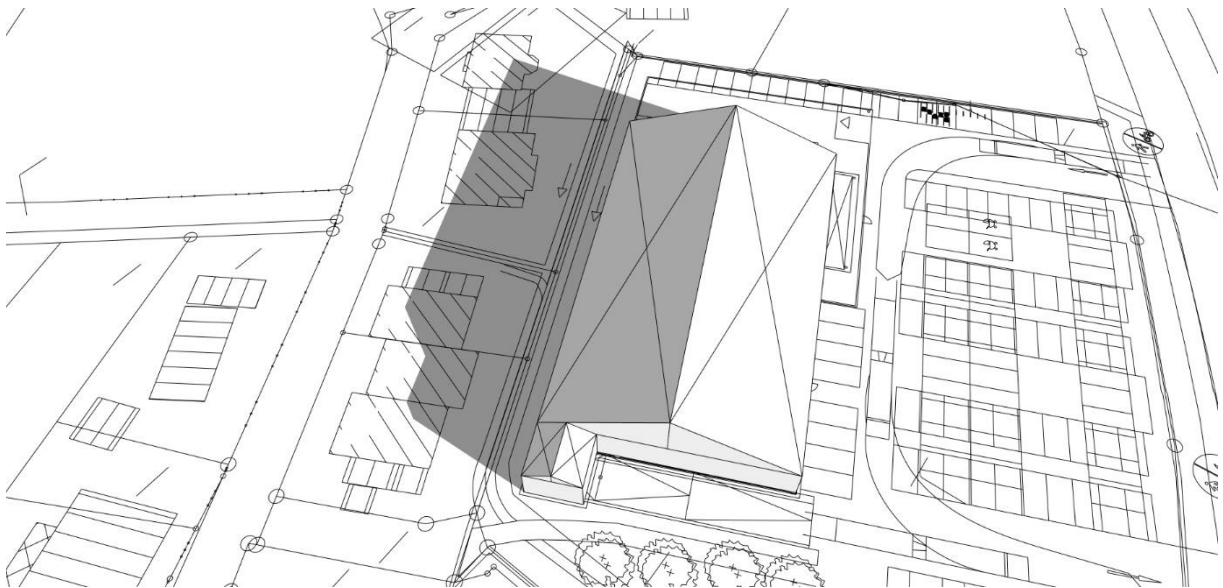
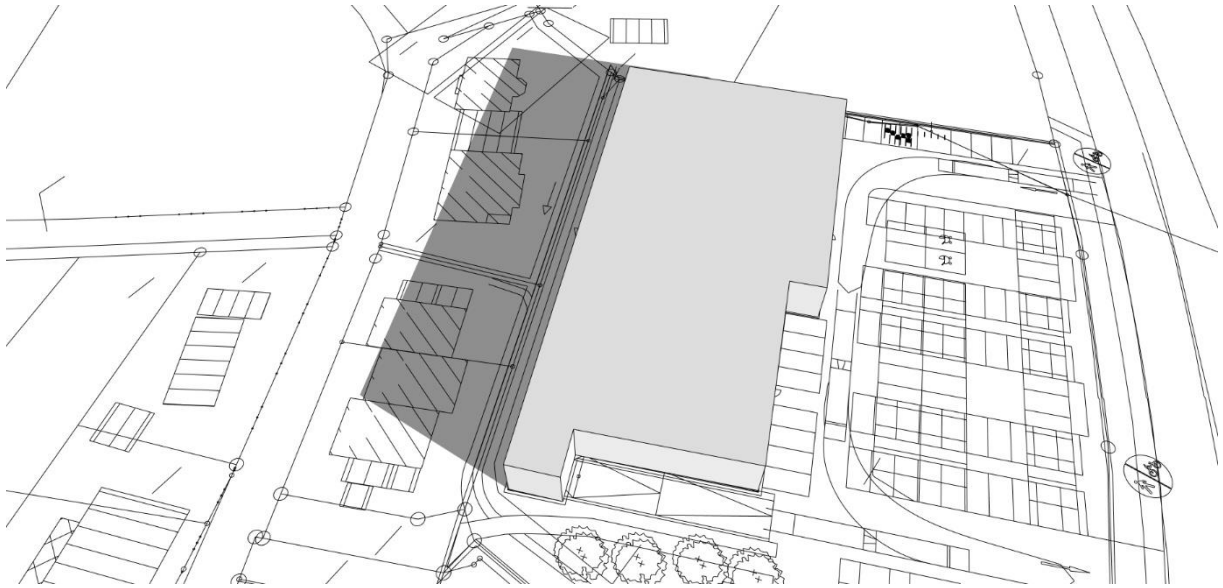
Januar 09:00



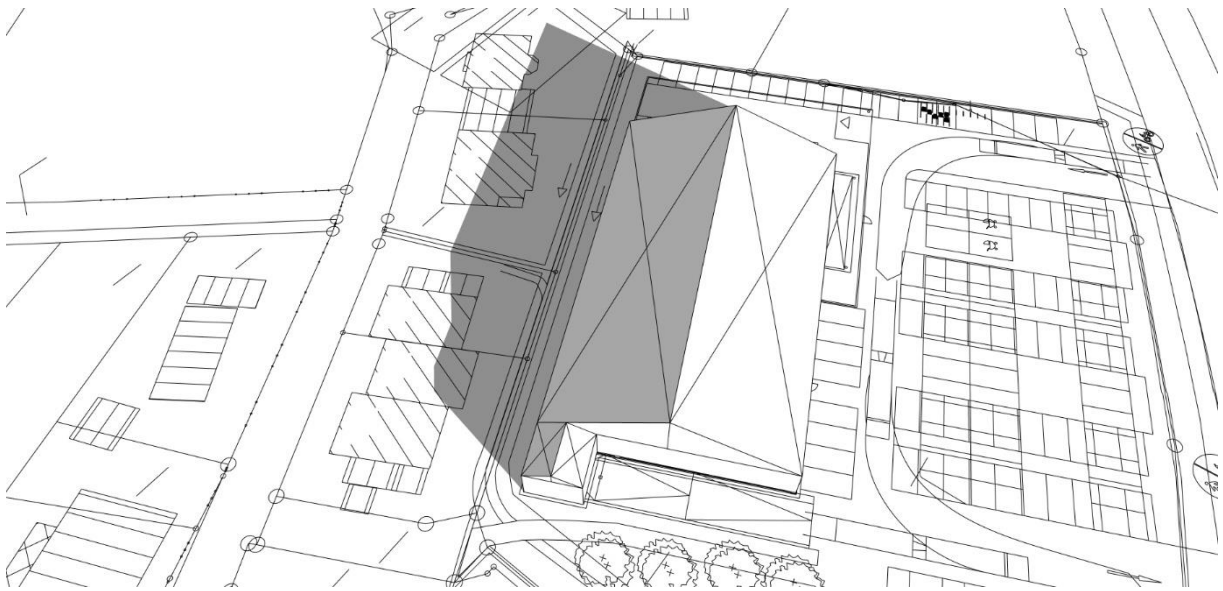
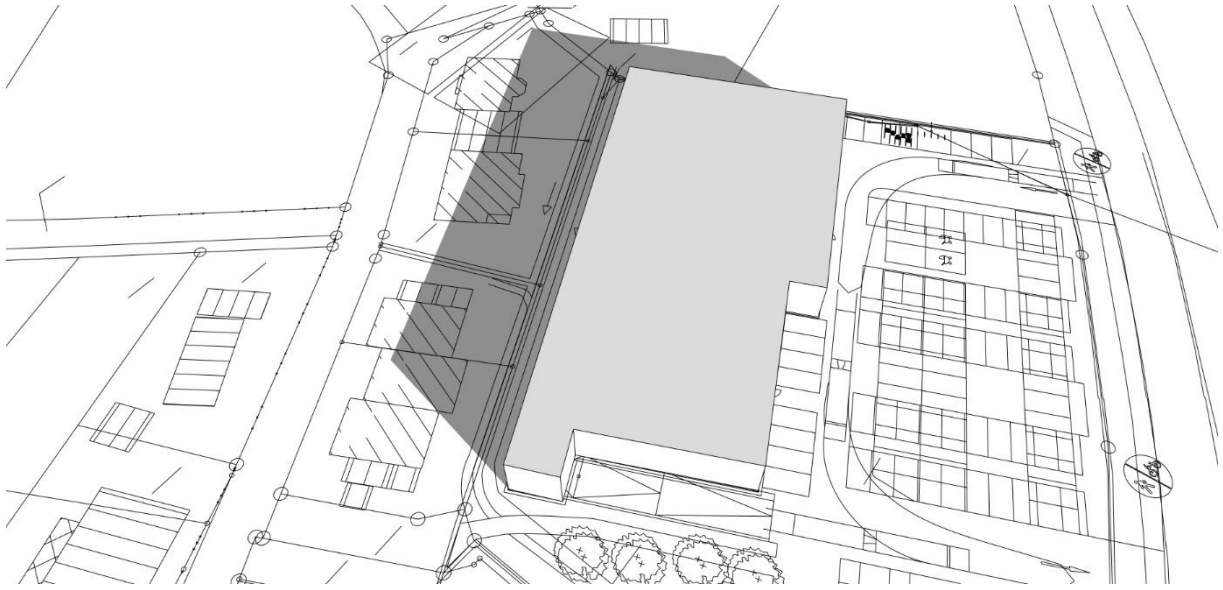
Januar 10:00



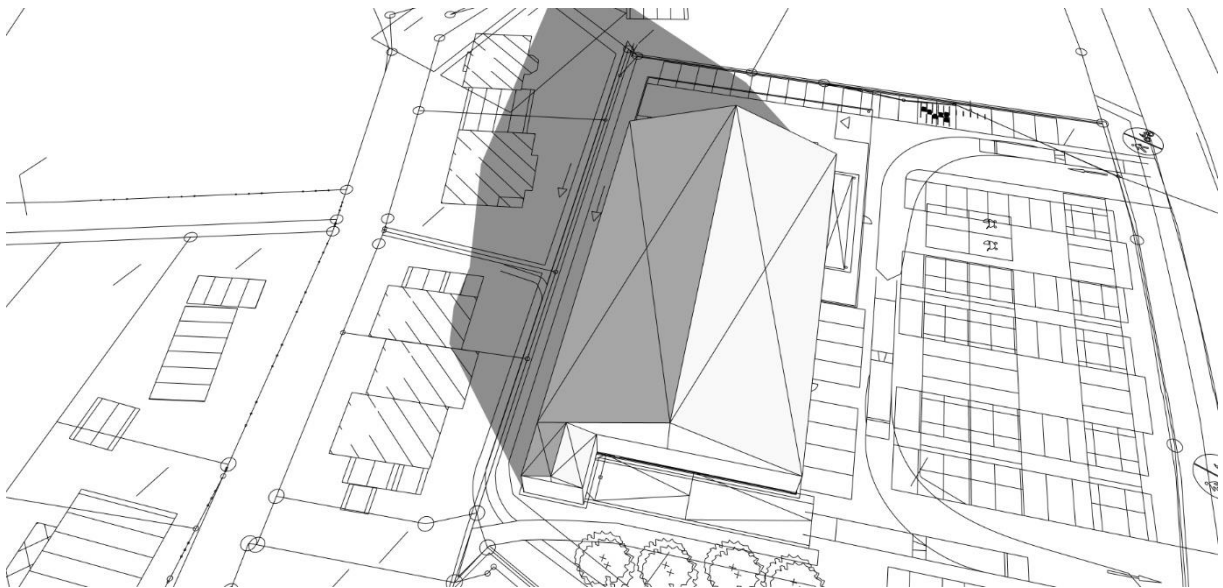
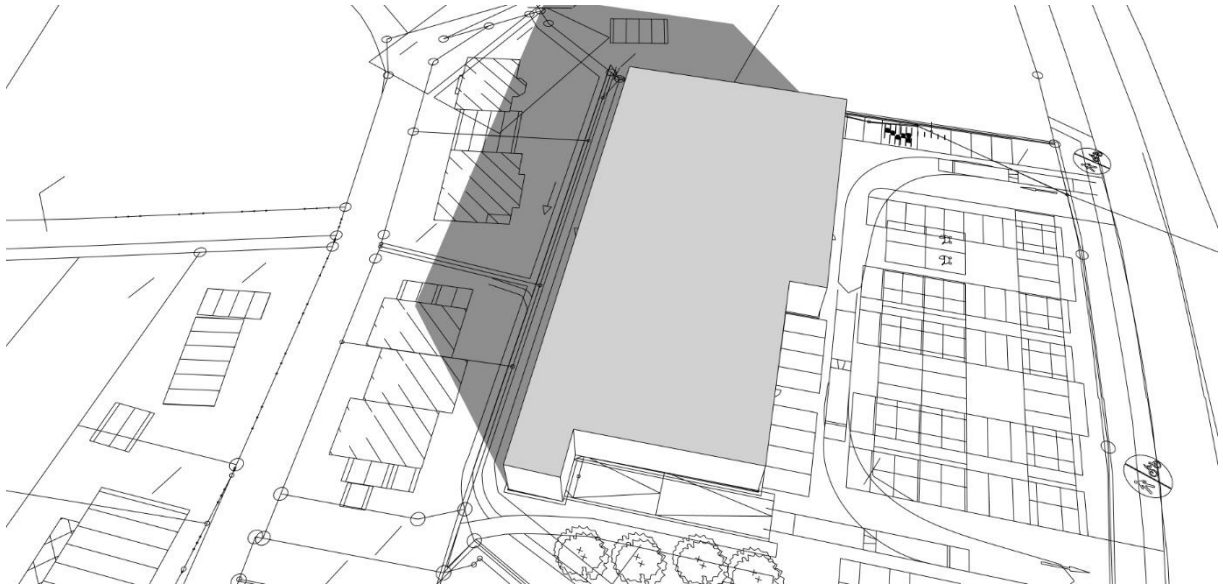
Januar 11:00



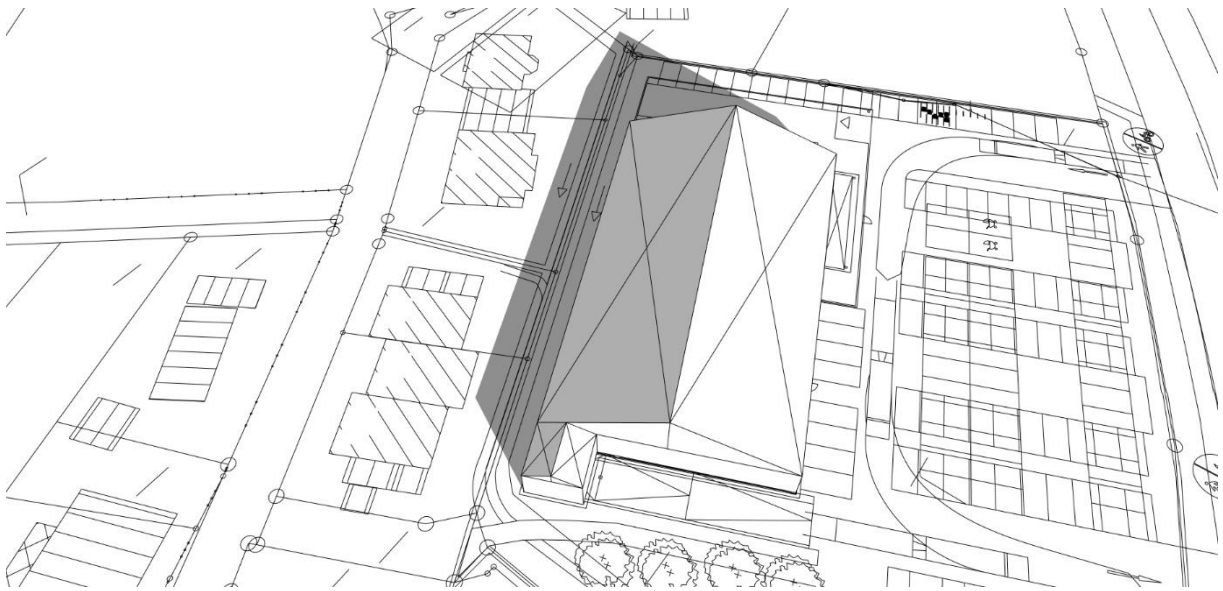
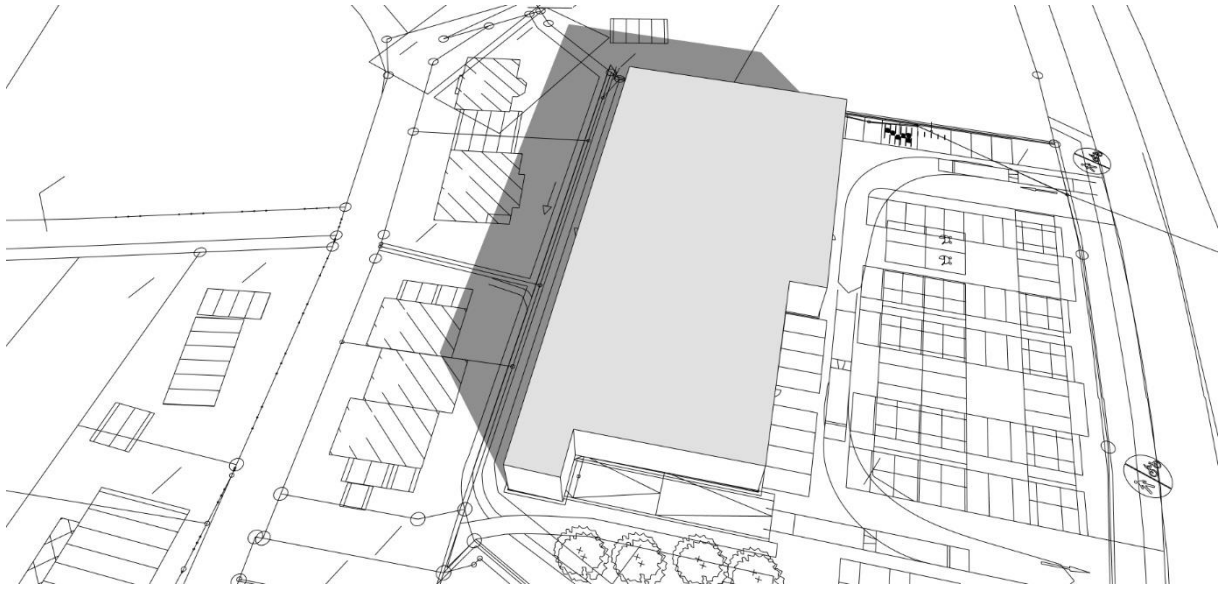
Januar 12:00



Januar 13:00

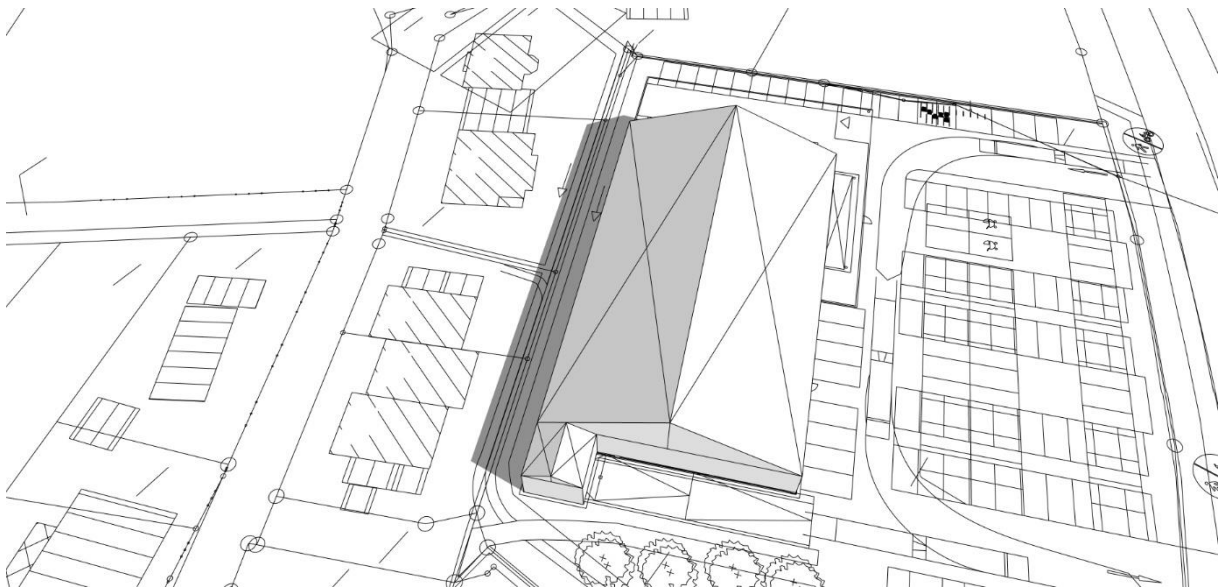
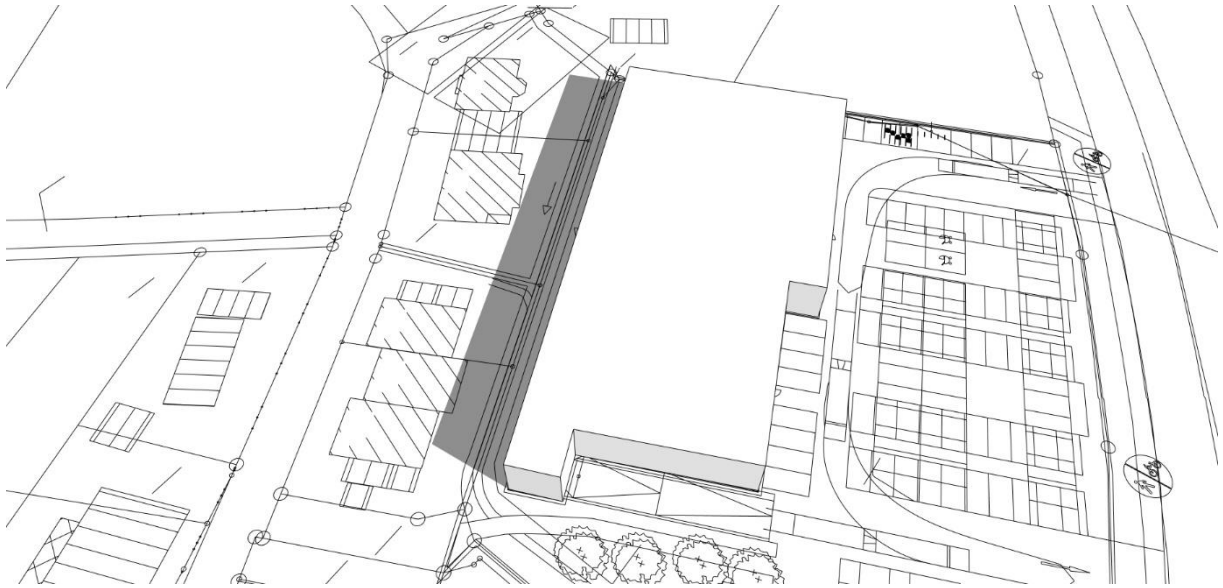


Januar 14:00

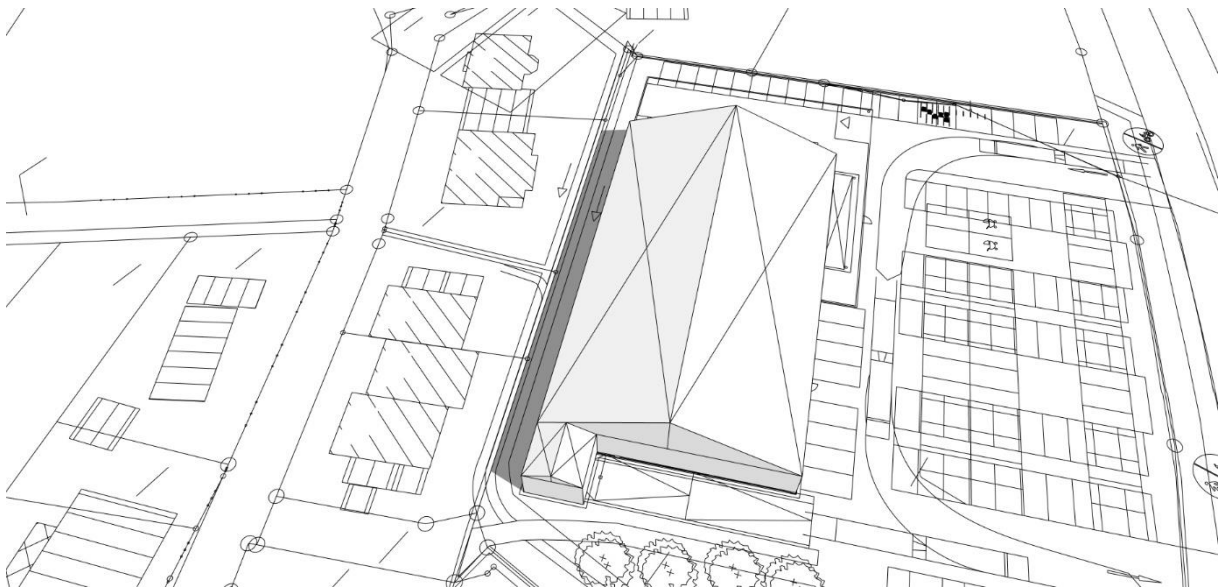
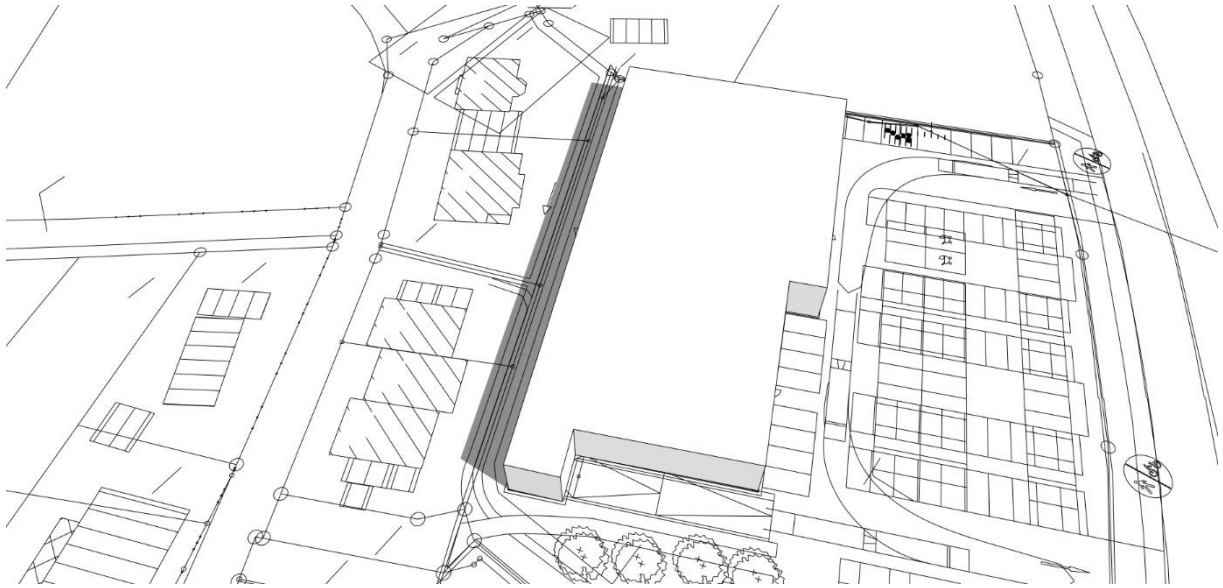


Februar 14:00

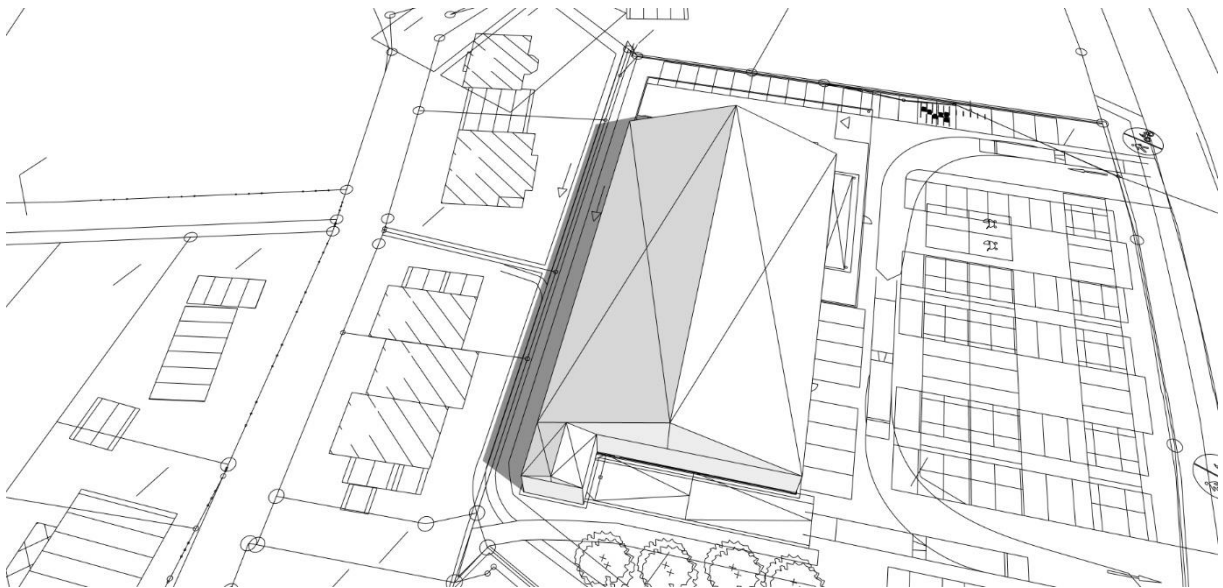
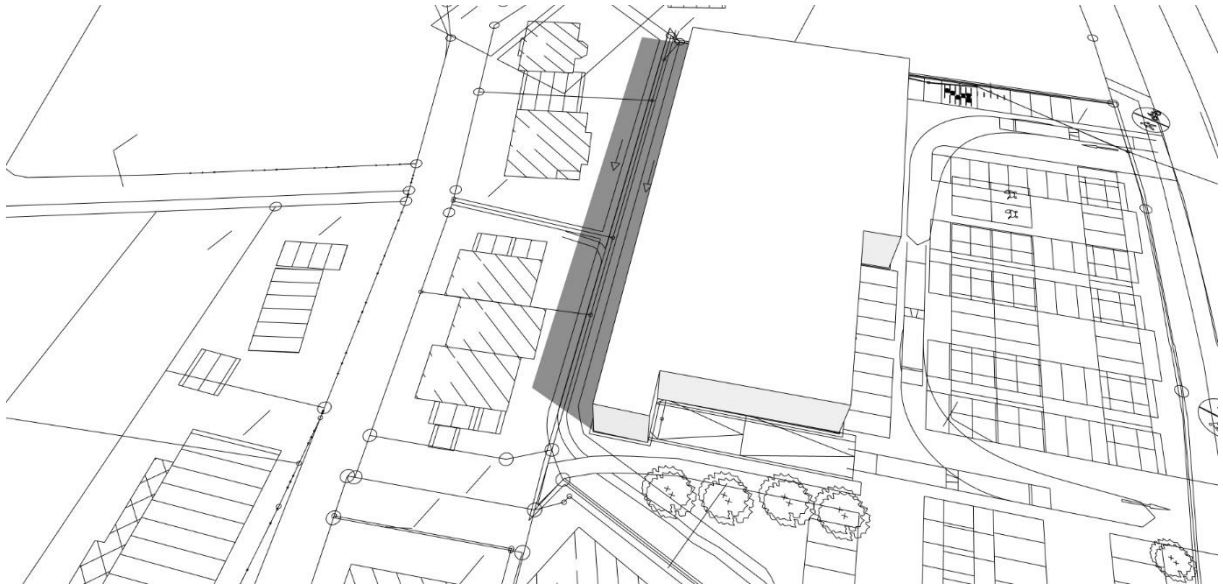




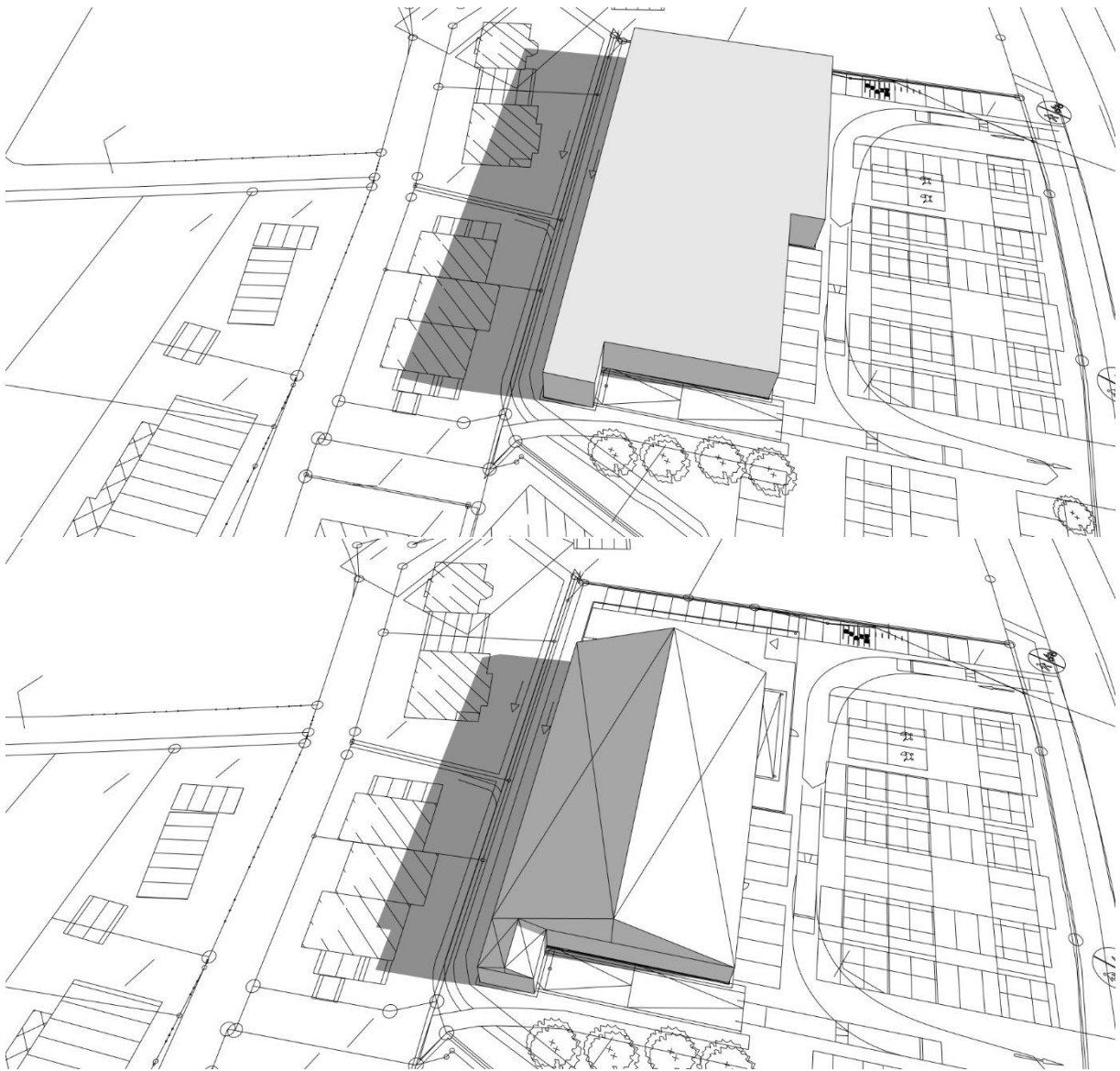
März 12:00



April 12:00



Oktober 12:00



November 10:00